

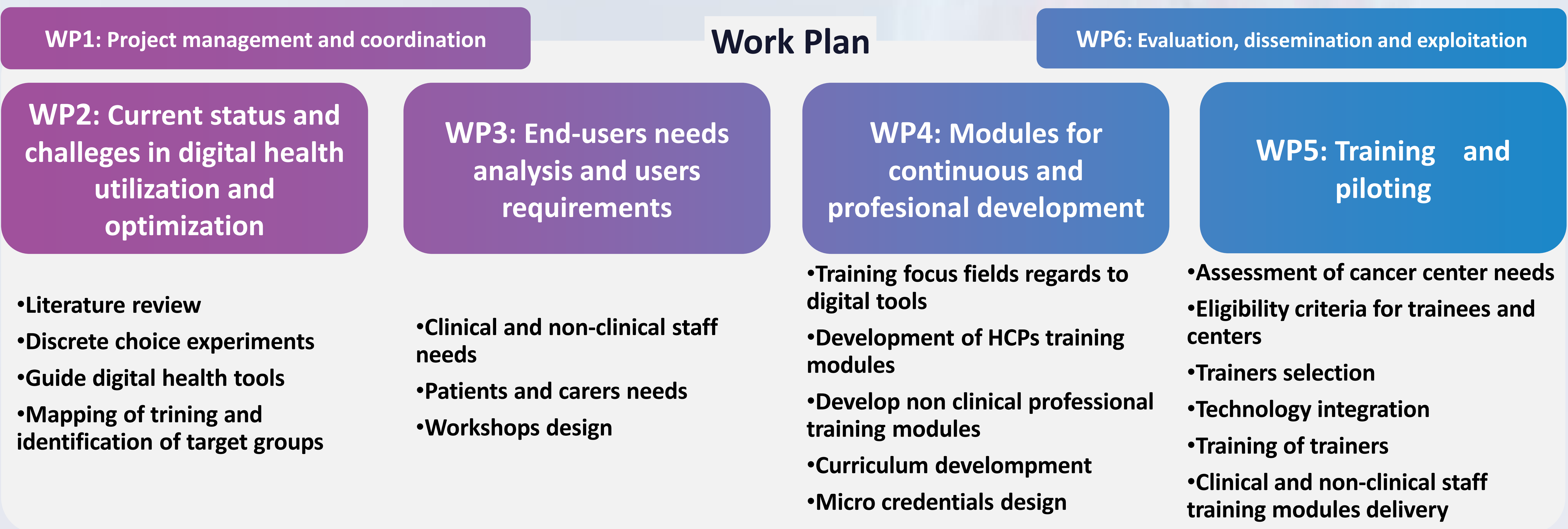
Digital TRANSition and digital resilience in ONcology

Ana Clavería, Jean Yves Le Reste, Radost Assenova, Ljiljana Majnaric, Péter Torzsa, Philip Domeyer, Noemí López-Rey, & Andreas Charalambous

INTRODUCTION

Cancer is the second leading cause of premature mortality and morbidity in Europe, and as such one of the main priorities of the European Commission in the health domain. The digital transformation of health and care has the capacity to act as a key enabler to enhance health and care. It can support the reform of health systems and their transition to new care models, centred on people's needs.

A consortium made up of 17 countries, with extensive participation of EGPRN members (Spain, France, Hungary, Croatia, Greece, Bulgaria, Slovenia), led by the European Cancer Organization, presented the TRANSITION project to EU4H- 2022-PJ-06 — Provide training for health workforce, including digital skills.



Aims

- ▶ To explore digital solutions for cancer prevention, diagnosis, treatment and survival
- ▶ To analyze the needs of end users and prioritize a digital tool for each of the stakeholders
- ▶ To design and train on the selected tools and the necessary digital skills for health personnel, patients and their informal caregiver

METHODS

1. Extensive mapping and systematic review of existing digital solutions and training in the participating countries.
2. End-user needs analysis and user requirements development which will involve all stakeholders in a participatory design methodology.
3. Design of the training in the selected digital solutions
4. Extensive training will be provided for the health workforce, patients and their informal carer in 17 countries involved.

RESULTS

- The project will strengthen the continuous professional development and training of healthcare professionals and non-clinical professionals.
- Cooperation with academic institutions specialized, as well as, the integration of pedagogical methods promoting active learning and technologically supported tools to increase interactivity are needed.
- Furthermore, engagement and health services involved are crucial.

POINTS FOR DISCUSSION

- ▶ How can EGPRN contribute in European Projects?
- ▶ How does Family Medicine contribute to research in cancer?
- ▶ Are we present at cancer Research?