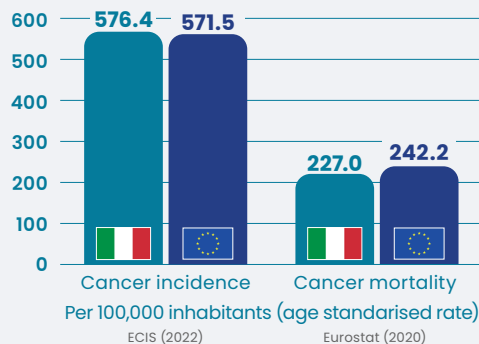
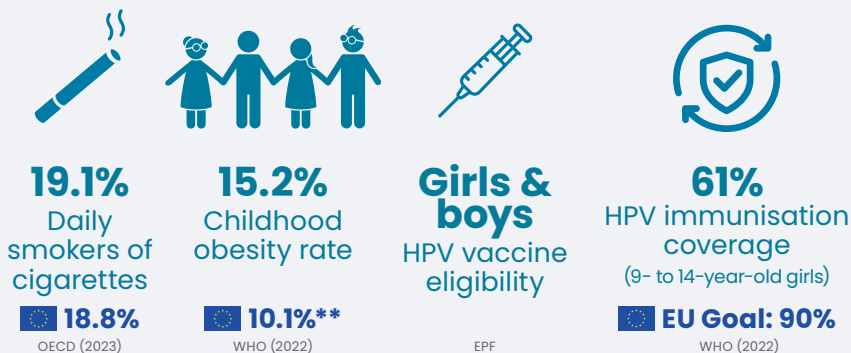


BURDEN

2nd cause of deaths*

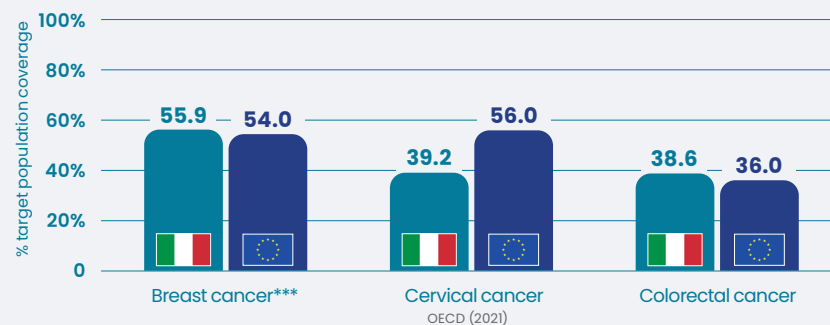


PREVENTION

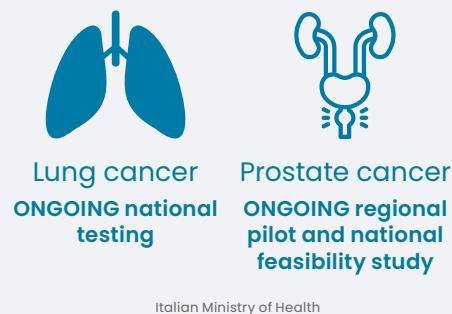


SCREENING

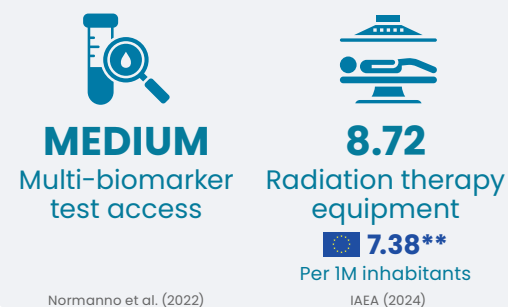
SCREENING RATES



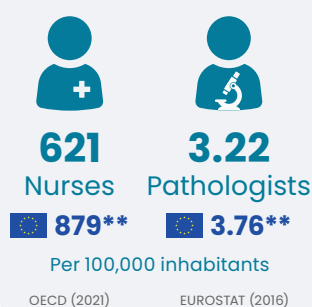
ORGANISED SCREENING PROGRAMMES



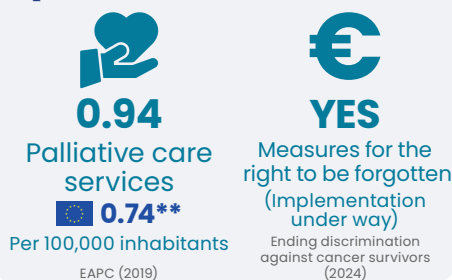
DIAGNOSIS AND TREATMENT



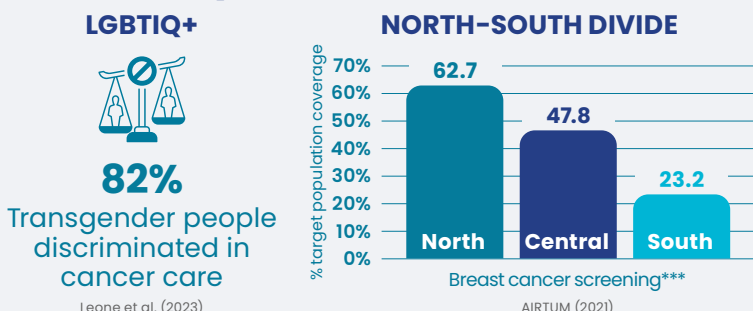
WORKFORCE



SURVIVORSHIP AND QUALITY OF LIFE



SOCIAL INEQUALITIES



NATIONAL CANCER INITIATIVES



*Global Burden of Disease Compare (2019). **Overall/Average value for countries of the WHO Europe region with available data (i.e. not EU-only). ***These two data sources use different methods to calculate breast cancer screening data - they are therefore not directly comparable. AIRTUM: Italian Association of Cancer Registries - EAPC: European Association for Palliative Care - ECIS: European Cancer Information System - ENCR: European Network of Cancer Registries - EPF: European Parliamentary Forum for Sexual and Reproductive Rights - IAEA: International Atomic Energy Agency - ICCP: International Cancer Control Partnership - Leone et al.: Cancer care in transgender and gender-diverse persons: results from two national surveys among providers and health service users by the Italian Association of Medical Oncology (ESMO Open) - Normanno et al.: Access and quality of biomarker testing for precision oncology in Europe (European Journal of Cancer) - OECD: Organisation for Economic Co-operation and Development - WHO: World Health Organization. Special thanks to Dr. Nicolò Battisti, Dr. Agnese Collino, Dr. Sabina Sieri, Donatella Barus, Prof. Alberto Costa, and Prof. Giovanni Apolone for their contribution to the development of this report.