



#TimeToActCancer
timetoactcancer.com/data-navigator

'Time To Act' Campaign – Interview Guide & Tips

Let's Build a Better Future
for Cancer Patients in Europe.



Share Your Take on the Impact of COVID-19 on Cancer Care

Please record your / your interviewee's short answers to any or multiple of the suggested questions below.

Record the answers to each question separately. You do not have to answer all questions – pick the one(s) that you prefer!

For healthcare professionals and medical societies:

1. The Covid-19 pandemic has impacted every healthcare system differently – what are they main challenges and gaps it has exposed in your opinion?
2. In your experience, what have been the biggest impacts you have observed on both cancer patients as well as on cancer care professionals (doctors, nurses, etc.) due to Covid-19?
3. How would you assess the level of confidence cancer patients have in cancer care services in your country?
4. In your opinion, what are the three key actions policymakers can take to address the challenges in cancer care delivery – both at the European level and in your country?
5. How has the 'Time to Act' Data Navigator helped you to get more information on the main challenges and gaps in your country and in Europe?

For patients and patient organisations:

1. The Covid-19 pandemic has impacted every patient differently – what were the main challenges you experienced / that were reported by patients in getting cancer care during the pandemic?
2. How has the Covid-19 impacted your / patients' trust and confidence in cancer care?
3. In your opinion, what is most needed to build more resilient cancer care and ensure that we avoid disruptions to cancer care during potential future crises?



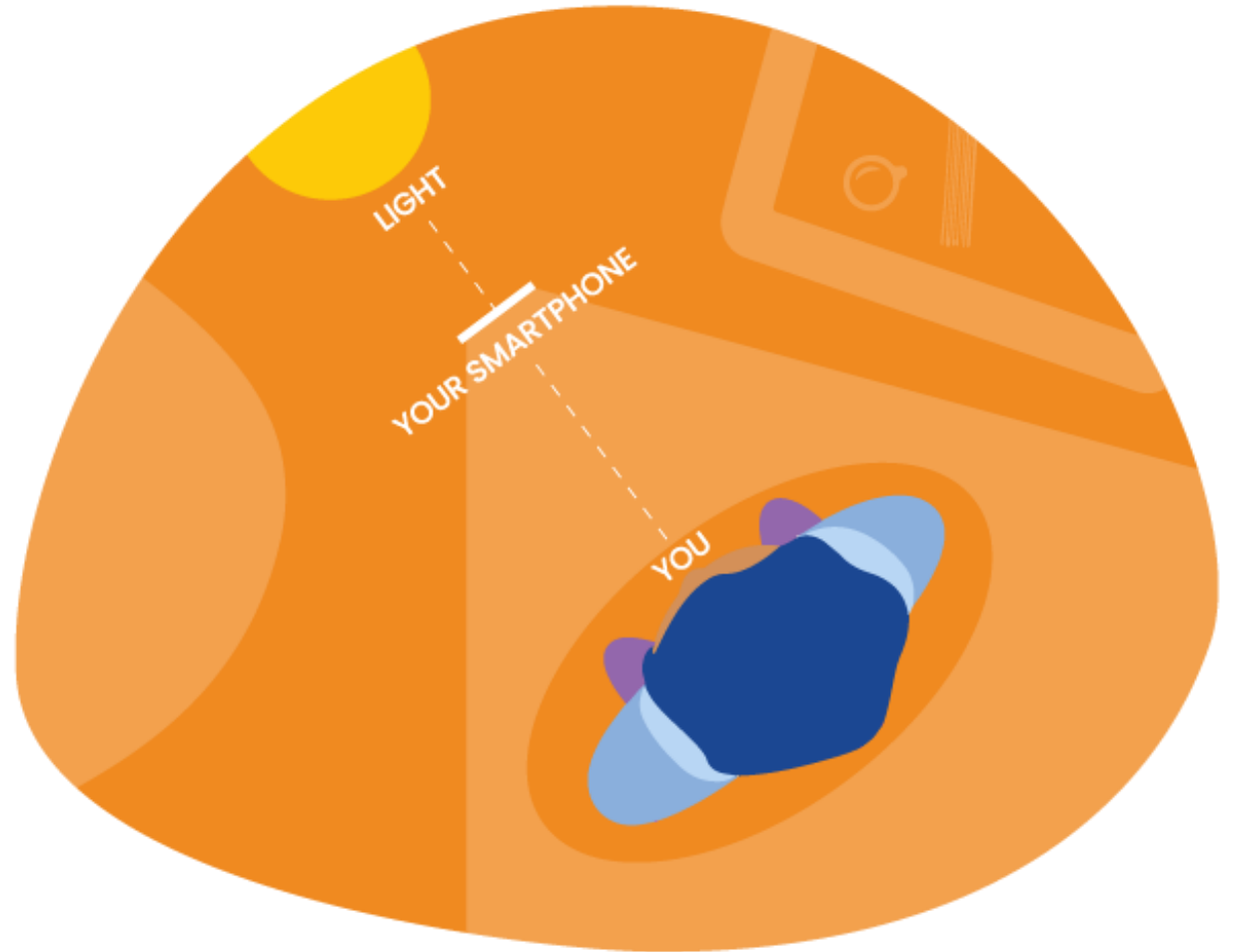
Tip #1 – Film Horizontally

- Film horizontally in a standing position – medium shot.
- Allow for space around you / your interviewee – e.g., film on one side of the screen to allow for space to demonstrate animation at the background.
- Keep the camera steady.
- Use a tripod or hold your smartphone firmly with your hands.



Tip #2 – Use Natural Light

- Lighting is key. Use natural light.
- Make sure that you / your interviewee is facing the light source when filming.



Tip #3 – Film Against a White Wall

- Composition and background matter.
A clean white wall will do the job!
- In case there are no white walls in the place where you film – another plain clean and even colour background will also work.



Tip #4 – Reduce Noise

- Film in a quiet inside space without background noises.



Tip #5 – Practice Your Speech

- Keep it short and punchy, up to 45 seconds.
- Practice your speech / allow your interviewee to practice theirs.
- Adapt the speed of your speech and make sure to take a breath between sentences / Encourage your interviewee to speak at a normal pace (not too fast, not too slow).

